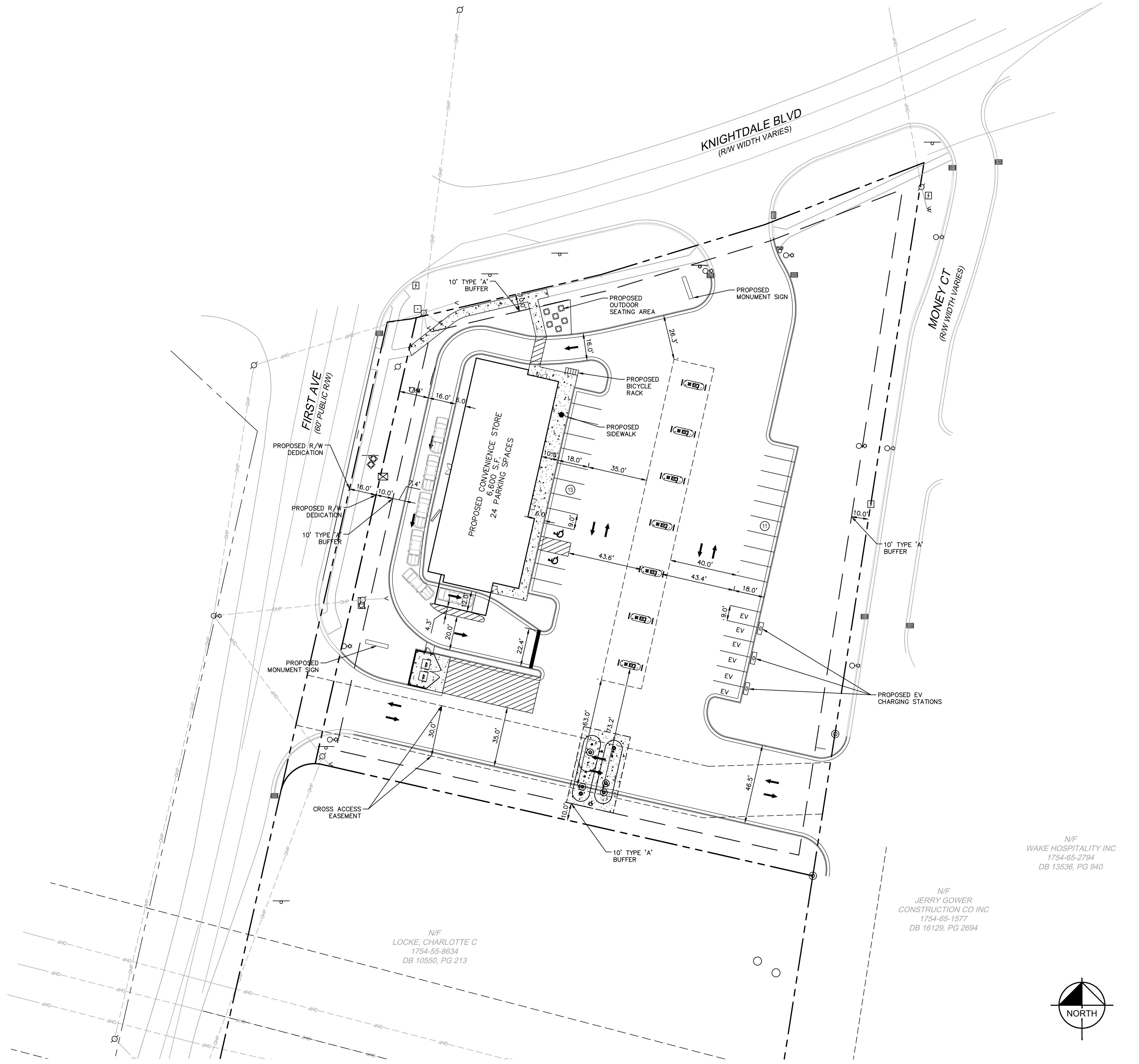


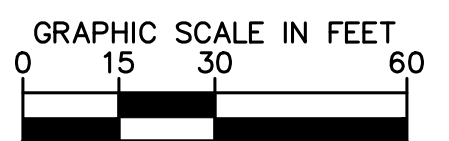
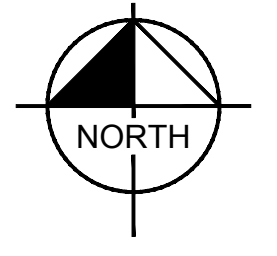
Plotted By: jds, Katie - Sheet: SHELTONLIN, CHARTER SCHOOL - Layout: Preliminary Site Layout - September 13, 2021 - 01:51:04pm - \\kimley-horn.com\SE\_RAL\KAL\DEV\Marketing Proposals\EP Mart\Knightdale\Preliminary Site Layout\PSL-4 Preliminary Site Layout.dwg  
 This document, together with the concepts and designs presented herein, is intended only for the specific purpose and client for which it was prepared. Reuse of and improper reliance on this document without written authorization and adaptation by Kimley-Horn and Associates, Inc. shall be without liability to Kimley-Horn and Associates, Inc.



N/F  
WAKE HOSPITALITY INC  
1754-65-2794  
DB 13536, PG 940

N/F  
JERRY GOWER  
CONSTRUCTION CO INC  
1754-65-1577  
DB 16129, PG 2694

N/F  
LOCKE, CHARLOTTE C  
1754-55-8634  
DB 10550, PG 213



**PRELIMINARY**  
NOT FOR CONSTRUCTION

No.	REVISIONS	DATE	BY

**Kimley»Horn**  
 © 2020 KIMLEY-HORN AND ASSOCIATES, INC.  
 421 FAYETTEVILLE STREET, SUITE 600, RALEIGH, NC 27601  
 PHONE: 919-677-2000  
 WWW.KIMLEY-HORN.COM

KHA PROJECT	017311002
DATE	09/13/2021
SCALE	AS SHOWN
DESIGNED BY	JCB
DRAWN BY	JCB
CHECKED BY	COB

**PRELIMINARY SITE  
LAYOUT**

**EP MART  
KNIGHTDALE**  
 PREPARED FOR  
**EASTERN PETROLEUM CORPORATION**  
 NORTH CAROLINA  
 KNIGHTDALE

SHEET NUMBER  
**PSL-4**