

THE CONDUCTOR



January 1, 2023
Program Guide

Table of Contents

Page 3Department Information
Page 4-5Special Events
Page 6-7Parks and Greenways
Page 8Youth Athletics
Page 9Adult Athletics
Page 10Fitness Partnerships
Page 11Community Partnered Programs
Page 12Clinics & Art
Page 13Facility Rentals
Page 14Social Media

About the Cover



Knightdale Station Park is located at the corner of First Avenue and Knightdale Station Run and is the largest of our park system. The area includes a stage and amphitheater area, Veterans Memorial Plaza, playground, dog park, splash pad, walking trails, and 4 multi-purpose fields for all to enjoy.

For additional details on the park and other trails and greenways see pages 6-7.

Staff Directory

Chris Wiley - Parks, Recreation, & Cultural Programs Director
Chris.Wiley@KnightdaleNC.gov
(919) 217-2230

J.P. Lefever – Assistant Director
John.Lefever@KnightdaleNC.gov
(919) 217-2238

Andrew Wilkins - Recreation Program Supervisor
Andrew.Wilkins@KnightdaleNC.gov
(919) 217-2236

Victor Davis - Athletics Supervisor
Victor.Davis@KnightdaleNC.gov
(919) 217-2231

Armoni Shipman - Athletics Supervisor
Armoni.Shipman@KnightdaleNC.gov
(919) 217-2234

Shannon Barnes - Administrative Assistant
Shannon.Barnes@KnightdaleNC.gov
(919) 217-2233

Advisory Board Members

Alan Smith Christina Brewer

Rita Blackmon Kenya Gomez

Department Information

This brochure contains the programs and events that were scheduled at the time of printing.
For the most up-to-date program information, please visit KnightdaleNC.gov.

Locations and Hours

Knightdale Parks, Recreation, & Cultural Programs Department Hours are 8:00AM—5:00PM, Monday—Friday.

Office location: **Harper Park (Main Office)**
207 Main Street
Knightdale, NC 27545

Fee Information

In this guide, you will notice many programs have different fees for Town of Knightdale residents (resident) and non-residents (Non-res). Municipal tax revenue is paid to the Town of Knightdale by residents living inside the corporate limits of the Town. Those living outside the corporate limits do not pay Town taxes and therefore are charged a higher rate for participation in certain programs. Participants must live inside the corporate limits of the Town of Knightdale at the time of registration to receive the resident rate.

Payments and Refunds Policy

Knightdale Parks, Recreation, & Cultural Programs accepts the following forms of payment for our programs and rentals. Cash, Check, Money Order, Credit Cards including MC, Visa, and Discover. A \$35 Service Fee will be charged for all returned checks.

Athletics — Full payment is due at time of registration in order to guarantee a spot in the program.

Classes and Programs—For Town registered programs, full payment is due at the time of registration.

Facility Rentals—(Outdoor locations) - Full rental payment is due at time of reservation. (Indoor locations) - Full payment due once the reservation has been approved.

Refunds

A full refund will be offered for all programs, classes and/or athletic leagues cancelled by the Town of Knightdale.

Refunds for facility rentals due to inclement weather will be honored if notification is given 48 hours in advance.

Athletics—Requests for refund received prior to the ordering of team uniforms, will be entitled to a full refund. In the event of injury or other hardship, the Department will evaluate on a case by case basis.

Partnership Programming—Partnership programs ran by a separate entity could have different payment options and refund policies.

Inclement Weather & Rained Out Notifications

Knightdale Parks, Recreation, & Cultural Programs utilizes the Rained Out weather notification system to notify parents and participants of delays or cancellations due to inclement weather. The athletics department will advise of the Rained Out registration process during seasonal parent meetings. The Town of Knightdale will also follow the WCPSS weather guidelines for closures and activities but reserves the right to revise or conduct activities based on the Safety First idea.



Registration Information

The Knightdale Parks, Recreation, & Cultural Programs Department uses both an online and in person registration program. Online registration may be completed through Knightdale.RecDesk.com. In person registration can be completed by visiting the main office located at Harper Park.

Registration deadlines are in effect for all athletics, programs, and facility rentals.

Athletics—Registration deadlines are listed in this program on pages 8 & 9. Please note, registrations after these dates are not guaranteed team placement.

Facility Rentals—Rentals can be completed online at Knightdale.RecDesk.com or during regular hours Monday-Friday 8:00AM—5:00PM at the Harper Park office.

Partnership Programming—Partnership programs ran by a separate entity could have different registration guidelines.

SPECIAL EVENTS AND COMMUNITY ACTIVITIES

Cupid Run 5K*

Join us for our annual Cupid Run 5k throughout the charming streets of Knightdale. Race starts and finishes at Knightdale Station Park. Medals are awarded throughout the day so come dressed up in your “runday” best.



REGISTRATION REQUIRED.

Feb 11	Sat	8:00AM	\$20	All Ages	KSP
--------	-----	--------	------	----------	-----

Movie in the Park

Join us for an outdoor movie. Bring your chairs and blankets to enjoy a family friendly showing under the stars at Knightdale Station Park. Bring your own picnic or enjoy one of our food trucks.



April 14	Fri	Dusk	Free	All Ages	KSP
Sept 22	Fri	Dusk	Free	All Ages	KSP

Spring Fling

Bring your Easter baskets and enjoy live music, food trucks, inflatables, and a vendor market. We'll have our modified Easter Egg Hunt meaning our vendors will have eggs at their stations to distribute. Join us at Knightdale's biggest spring event!



April 1	Sat	1:00PM-4:00PM	Free	All Ages	KSP
---------	-----	---------------	------	----------	-----

July 4th Celebration

Come out to the Annual “4th on First” Celebration at Knightdale Station Park. This FREE event includes food trucks, inflatables, performances, and fireworks.



July 4	Tues	3:00PM-9:00PM	Free	All Ages	KSP
--------	------	---------------	------	----------	-----

African American Festival

Come out and enjoy your evening at our 1st African American Festival. This community event will be celebrated with food trucks, vendors, music, and more.



June 17	Sat	5:00PM-9:00PM	Free	All Ages	KSP
---------	-----	---------------	------	----------	-----

Latin American Festival

Join us for our 2nd Latin American Festival. Come immerse yourself in Latin American culture through foods, handmade crafts, and enjoying Latino music & dance.



May 7	Sun	12:00PM-7:00PM	Free	All Ages	KSP
-------	-----	----------------	------	----------	-----

Facility Legend

KSP = Knightdale Station Park

KRC = Knightdale Recreation Center

SPECIAL EVENTS AND COMMUNITY ACTIVITIES

Fall on First Avenue (Smokin' Bacon)

Mark your calendars and bring the family to Knightdale Station Park for a fun-filled day of bands, vendors, mums and pumpkins, food trucks, inflatables, hayrides, BBQ, and more!



Oct 7	Sat	1:00PM-4:00PM	Free	All Ages	KSP
-------	-----	---------------	------	----------	-----

Trunk or Treat

Dress up in your Halloween best and make sure to stop by Trunk or Treat. Kids will enjoy treats, bounce houses, deejay, food trucks, and more!



Oct 27	Fri	5:00PM-7:30PM	Free	All Ages	KSP
--------	-----	---------------	------	----------	-----

Turkey Leg 5K*

Join us for our annual Turkey Leg 5k. Race starts and finishes at Knightdale Station Park. Runners and walkers are welcome. Each participant will receive a medal and gift.



REGISTRATION REQUIRED.

Nov 18	Sat	8:00AM	\$20	All Ages	KSP
--------	-----	--------	------	----------	-----

**Register online at [Knightdale.RecDesk.com](https://knightdale.recdesk.com) or in person at 207 Main St. Knightdale, NC 27545*

Arts and Education Festival

Understanding that education is the pathway to success, the mission is to connect community members with local non-profits, educational, wellness, and cultural arts opportunities they may not otherwise be exposed to. This collaborative effort of community partners plays an important role in strengthening the educational component in Knightdale.



Aug 19	Sat	10:00AM-1:00PM	All Ages	KSP
--------	-----	----------------	----------	-----

Christmas on First Avenue

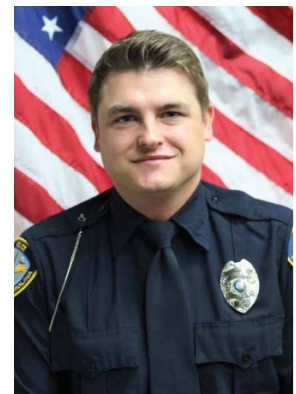
A great way to start the holiday season is at our annual Tree Lighting and Christmas Parade. The tree lighting is held the first Friday of December and the Christmas Parade is held the second Saturday of December.



Dec 1	Fri	6:00PM-8:00PM	Free	All Ages	KSP
Dec 9	Sat	11:00AM	Free	All Ages	KSP

Live Like Ryan 5K*

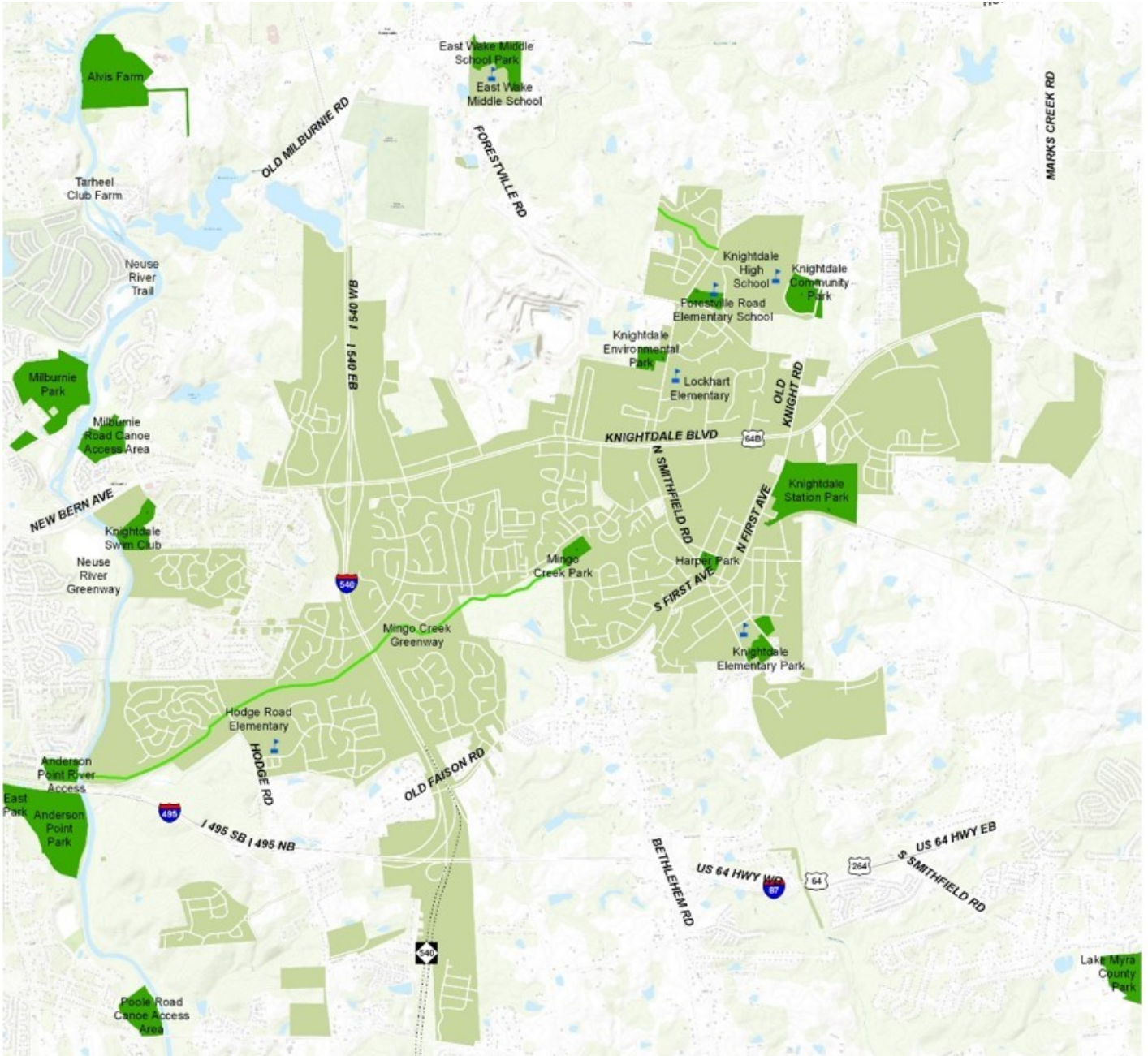
Join us for our 1st Live Like Ryan 5k. October 17, 2023 marks 2 years since Ryan's passing; let's come together in remembrance of him. Race starts and finishes at Knightdale Station Park. Runners and walkers are welcome. Each registrant will receive a medal and gift.



REGISTRATION REQUIRED.

Oct 14	Sat	8:00AM	\$20	All Ages	KSP
--------	-----	--------	------	----------	-----

PARKS AND GREENWAYS



Adopt-A-Trail Program

This program provides volunteer opportunities for interested individuals, businesses and groups to participate in trail cleanup to keep our parks and trails beautiful and safe for all to enjoy. The citizen volunteer/group must sign the Adopt-A-Trail agreement stating that they will maintain their section of the greenway trail quarterly for at least one year.

For more information on this program please contact (919) 217-2232.

PARKS AND GREENWAYS



Harper Park

207 Main Street
Knightdale, NC 27545

Named in honor of Knightdale's longest serving mayor, Eugene Harper, this four-acre neighborhood park currently features four tennis courts, four pickleball courts, restrooms, covered picnic shelter, and more than two acres of shaded woods and lawns perfect for a relaxing afternoon. Playground tentative opening date is mid-April. Harper Park is open from sunrise to 10:00PM, unless pre-planned events warrant a change.

Knightdale Community Park

101 Bryan Chalk Lane
Knightdale, NC 27545

Knightdale Community Park is located on the back side of Knightdale High School. Special athletic and High School sporting events are held here year round. The complex includes 4 lighted ball fields, a concession stand, and children's playground. Knightdale Community Park is open from dawn until dusk unless pre-planned events warrant later hours.



Knightdale Environmental Park

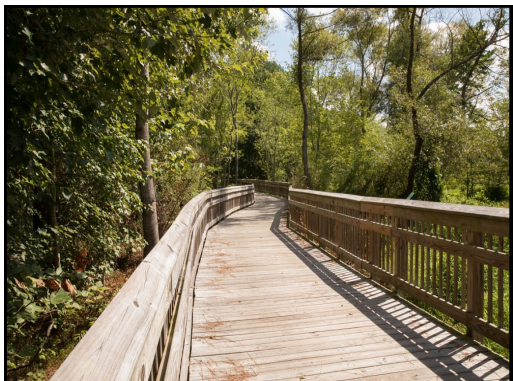
1385 N Smithfield Road
Knightdale, NC 27545

With entrances from Town Hall and the side of East Wake Regional Library, the Knightdale Environmental Park offers a circuitous natural walking trail and boardwalks around a pond with benches, overlooks, public art, and two picnic shelters.

Knightdale Station Park and Trails

810 N. First Ave
Knightdale, NC 27545

Knightdale Station Park, our newest central gathering space is open daily from dawn until dusk. This park includes a playground, splash pad, picnic shelters, the Ashley Wilder Dog Park, walking/running trails and athletic fields. Soon to come is a 9 hole disc golf course.



Mingo Creek Park and Trails

100 Parkside Commons Dr.
Knightdale, NC 27545

Mingo Creek Park is located on an 8.2 acre site. Presently, the park features two half-court basketball courts, playground, and an entry point to the Mingo Creek Trail. The Mingo Creek Trail provides 3.5 miles of new places to explore in and around Knightdale's scenic wetlands and hardwood forests. The trail includes wood-ed boardwalk and paved asphalt sections. Explorers don't have to end their route in Knightdale. The trail connects to the City of Raleigh's Neuse River Greenway Trail at a pedestrian bridge near Anderson Point Park. From there, fitness enthusiasts have access to some 30 miles of greenway.

YOUTH ATHLETICS

Sport	Ages	Registration Dates	Season	Resident Fee	Non-Res Fee
Spring Baseball	7-15 Boys & 7-8 Girls	Jan. 1 - Mar. 1	March - May	\$45.00	\$65.00
Spring Softball	9-12 Girls	Jan. 1 - Mar. 1	March - May	\$45.00	\$65.00
Spring T-Ball	4 Boys and Girls	Jan. 1 - Mar. 1	March - May	\$25.00	\$40.00
Spring Modified T-Ball	5-6 Boys and Girls	Jan. 1 - Mar. 1	March - May	\$25.00	\$40.00
Spring Coach Pitch Baseball	7-8 Boys	Jan. 1 - Mar. 1	March - May	\$45.00	\$65.00
Spring Coach Pitch Softball	7-8 Girls	Jan. 1 - Mar. 1	March - May	\$45.00	\$65.00
Knightdale Volleyball Academy: Skills Development	7-12 Boys & Girls	Feb. 1 - Mar. 1	April	\$25.00	\$45.00
Summer Basketball	5-15 Boys & Girls	April 1 - April 30	June - August	\$45.00	\$65.00
Fall T-Ball	4 Boys & Girls	Jul. 5 - Jul. 31	August - October	\$25.00	\$40.00
Fall Modified T-Ball	5-6 Boys & Girls	Jul. 5 - Jul. 31	August - October	\$25.00	\$40.00
Fall Baseball	7-15 Boys & 7-8 Girls	Jul. 5 - Jul. 31	August - October	\$45.00	\$65.00
Fall Softball	10-12 Girls	Jul. 5 - Jul. 31	August - October	\$45.00	\$65.00
Fall Basketball	13-15 Boys	Aug. 15 - Sept. 5	September - November	\$45.00	\$65.00
Winter Basketball	5-12 Boys & Girls	Sept. 15 - Oct. 15	November - February	\$45.00	\$65.00

Baseball

Knightdale Parks, Recreation, and Cultural Programs offers youth baseball for ages 4-15. Skills evaluations will be held for 7-15 year olds. The spring session consists of practices, Opening Day in late April, and full-length games starting in May.

The KPRD baseball program is driven to provide a comprehensive learning environment for all baseball skill levels.

Softball

Knightdale Parks, Recreation, and Cultural Programs offers youth softball in the Fall and Spring months. The KPRD softball program is driven to provide a comprehensive learning environment for all softball skill levels.

KPRD Softball offers programming for athletes from 9-12 years old (Girls Ages 4-8 play in our Co-Ed T-Ball and Coach Pitch Baseball Programs). Registration begins January 1st and skill evaluations aren't done.

Volleyball Academy

Instructional Volleyball Academy is hosted by Raleigh Volleyball Club. Academy meets every Monday and Thursday from 6:15PM-8:00PM at the Knightdale Recreation Center.

Basketball

Knightdale Parks, Recreation, and Cultural Programs offers youth basketball in the Winter and Summer months. Youth basketball is for ages 5-15.

ADULT ATHLETICS



Sport	Ages	Registration Dates	Season	Resident Fee	Non-Res Fee
Fall Co-Ed Kickball	18 & Up Men & Women	Aug. 15 - Sept. 15	September - October	\$40.00	\$60.00
Fall Co-Ed 3 on 3 Basketball	25 & Up Men & Women	Aug. 15 - Sept. 15	September - October	\$30.00	\$50.00

Kickball

KPRD Adult Co-Ed Kickball will utilize WAKA (World Adult Kickball Association) rules to govern this league with small modifications such as no bunting. Games will be played @ Knightdale Elementary School Field #2 on Tuesday, Wednesday and Thursday nights. Games will last 45 minutes or 5 innings whichever comes first.

Basketball

Uniforms are provided by KPRD. Games will be played on Monday & Wednesday nights @ Knightdale Recreation Center. Game times include: 7:00PM, 7:30PM, and 8:00PM. Games will be played in a 20 minute running clock format on the two basket mini courts.

Ready to register for your favorite program?

Try any one of our convenient ways:



Browse programs or
register online at
Knightdale.RecDesk.com



Stop by our main office:

207 Main St.
Knightdale, NC 27545

Need help registering? Call (919) 217-2232 for assistance.

FITNESS PARTNERSHIPS

Camp Gladiator

Join Camp Gladiator on Monday, Wednesday, and Friday of each week for a fitness program at Knightdale Station Park! These high energy workout sessions are challenging, dynamic, and led by all-star certified personal trainers. For more information, contact Clay Glandt at claytonglandt@campgladiator.com

Jan - Dec	Mon, Wed, Fri	5:15AM-7:15AM	KSP
Jan - Dec	Mon, Wed	5:15PM-7:15PM	KSP



Z-Fitness Line Dancing/Zumba

Ready to learn a few steps all while meeting new friends, staying active, and having a great time? Come have fun and learn new line dances or zumba all while getting a cardio workout! You'll enjoy burning off calories while dancing. For more information, contact Jacque Allen at (919)720-9495 or jacqueallen.zumbafitness@gmail.com.

Spring & Fall	Mon	10:00AM—10:45AM	KSP
Spring & Fall	Tues,Thurs, Sat	TBD	KSP



Z-Fitness Aqua Zumba

Looking for a fun, yet challenging water-based workout? Join us for Aqua Zumba during the summer. This full-body, up-tempo workout will leave you wanting more! For more information, contact Jacque Allen at (919)720-9495 or jacqueallen.zumbafitness@gmail.com.

Summer	TBD	TBD	Community Pool
--------	-----	-----	----------------



COMMUNITY PARTNERED PROGRAMS

The Knightdale Parks, Recreation, & Cultural Programs Department is proud to partner with many local organizations and instructors to bring opportunities and programs to our community. Registration and payment for all programs listed below are handled through the partner organization directly.

Flying Feet Run Club

Running is more fun with friends! This children's enrichment program is for all fitness levels. Register Now at flyingfeetllc.com. For more information, contact Sheila Haunert at (919)626-2481 or flyingfeetrclub@gmail.com.



Artfully Creative Education

Artfully Creative Education, is a mobile kids art studio that strives to bring art education to children ages 2-12 in the community. Register at www.artfullycreativeeducation.com. Call or text (772)480-1687 for more information.



Artfully Creative Education
Exploring your creative side

Recreation Soccer

NRFA's recreational league is a volunteer based, inclusive soccer program for kids of all abilities and experience levels, ages 3 and up. For more information, visit www.neuseriverfa.org.



Tennisbloc/TryTennis

The Knightdale Tennis Academy is a skill development clinic including instruction from Raleigh Tennis Association, Try Tennis, and Tennisbloc coaches, players & guest speakers. Join today at www.tennisbloc.com or www.raleightennis.com



Cheerleading

Champions In Motion teaches cheerleading techniques such as short chants, arm motions, jumps, kicks and stunting techniques. Students are also taught a special long team performance routine each semester that is presented at the Cheer Showcase. Register today at www.CIMUSA.com.



Karate

Champions In Motion specializes in teaching martial arts to youth ages 4-18. Students will be taught kicks, punches, blocks, stances, katas, sparring combinations, and other martial arts/self-defense techniques and strategies. Register today at www.CIMUSA.com.



YMCA Summer Camp

Camp Knightdale Station gives kids the opportunity to explore new activities, make new friends and build memories that last a lifetime. From silly games to projects designed to explore the world around them, Camp Knightdale Station will excite and engage your child all summer long. For more information, contact Matt Strait at (919)266-9622 or Matt.Strait@YMCATriangle.org.



YMCA Track Out Camp

YMCA Track Out Camps are the perfect place for your year-round student to find friendship, think creatively, build confidence, learn new skills, stay active, and have fun during their break from school. For more information, contact Matt McDonough at (919)845-3879 or Matt.McDonough@YMCATriangle.org. (Serves Track 4 Only)



CLINICS

Pickleball

Paddle up and let's play pickleball! Learn the rules of the game, understand how to keep score, and have fun along the way! Spring & Fall Clinics coming soon. Register at Knightdale.RecDesk.com.



Crazy Running

Get the kids moving and make exercise fun! Runners are introduced to simple strength exercises, fundamental running techniques, and play games that provide a kid-friendly cardio workout. For more information, visit Knightdale.RecDesk.com.



ART

The Town of Knightdale presents monthly art exhibitions at Town Hall. The public is invited to view the works of accomplished area and regional artists on display during Town Hall regular public hours and on the Knightdale Parks and Recreation's Facebook page.

Artists working in any medium are invited to submit an application for exhibition. Applications may be submitted at any time. This opportunity is open to any artist or curator seeking to organize a display. Commercial gallery artists are not eligible, although artists represented by a commercial gallery are eligible to apply as an individual. Written proposals for themed exhibitions may be submitted along with artists' images.

Works in all disciplines will be considered; however, due to limitations of the exhibition space, artwork that can be hung on the walls must have an attached hanging wire on the back. Artists are responsible for delivery, installation and removal of artwork for exhibitions. Sales will be handled by the artist.

You will be notified after your work has been reviewed. Town of Knightdale specifically reserves the right to prohibit or call for the removal of any or all of an exhibition at any time.

[Download an application](#) or contact Knightdale Parks and Recreation at 919-217-2233.



FACILITY RENTALS

PSNC Energy Shelter

Located next to the Knightdale Station Park playground, the PSNC Energy Shelter is the perfect spot for a child's birthday party or family gathering. Shelter includes 10 picnic tables, 2 charcoal grills, and electrical outlets. Max capacity is 75 people. Rental hours are from 10:00AM—1:00PM or 2:00PM—5:00PM.

Resident Rate:
\$40/hr

Non-Resident Rate:
\$65/hr



YMCA Picnic Shelter

Located next to the YMCA Pool, the YMCA Picnic Shelter is the perfect spot for your next gathering. Shelter includes 7 picnic tables, 1 charcoal grill, and electrical outlets. Max capacity is 75 people. Rental hours are from 10:00AM—1:00PM or 2:00PM—5:00PM.

Resident Rate:
\$40/hr

Non-Resident Rate:
\$65/hr



Pavilions at Knightdale Station Park

Located at beautiful Knightdale Station Park, our Wilder Plaza open-air pavilions are a one-of-a-kind rental space. Whether you are hosting a private graduation party or a large corporate event, this covered outdoor pavilion will be a hit! Rental includes a limited number of tables and chairs. Rental hours are from 8am-6pm (with seasonal adjustments).

Resident Rate: \$100/hr (per pavilion)

Non-Resident Rate: \$125/hr (per pavilion)

Rental requests may require the submission of a Private Event Request Application



Knightdale Recreation Center Rooms

Need an indoor space for your next special event? Consider one of our rooms at the Knightdale Recreation Center. Rental includes 6 ft tables, chairs, and access to restrooms. Rental Hours are Monday-Friday 6:30PM-8:30PM, Saturday 10:00AM-1:00PM, Saturday 2:00PM-5:00PM, Saturday 10:00AM-5:00PM, or Sunday 2:00PM-5:00PM.

Cabin (capacity 35 people)

Resident/Non-Resident Rate: \$40/\$65 hr

Box Car (capacity 70 people)

Resident/Non-Resident Rate: \$70/\$95 hr

Galley (refrigerator, microwave, oven)

Resident/Non-Resident Rate: \$20/\$35 flat rate



Cabana at Knightdale Community Pool

Want to make a splash? How about hosting a pool party? Cabana rental includes private access to the cabana for 2 hours. Grills are not allowed, but food and drinks are permitted. Rental hours are from 12:00PM-2:00PM or 3:00PM-5:00PM (weekends only).

Cabana Rental (includes 10 pool passes)

Resident/Non-Resident: \$60/\$80 flat rate

Pool passes will be available at the front gate the day of your rental.





Like us on Facebook
[Facebook.com/KdaleParksandRec](https://www.facebook.com/KdaleParksandRec)



Follow us on Instagram
[Instagram.com/kdaleparks](https://www.instagram.com/kdaleparks)



Follow us on Twitter
[@KdaleParks](https://twitter.com/KdaleParks)

This brochure contains the programs and events that were scheduled at the time of printing.
For the most up-to-date information, please visit **[KnightdaleNC.gov](https://www.knightdalenc.gov)**.

Please note, programs and events are subject to cancellation or change at anytime.