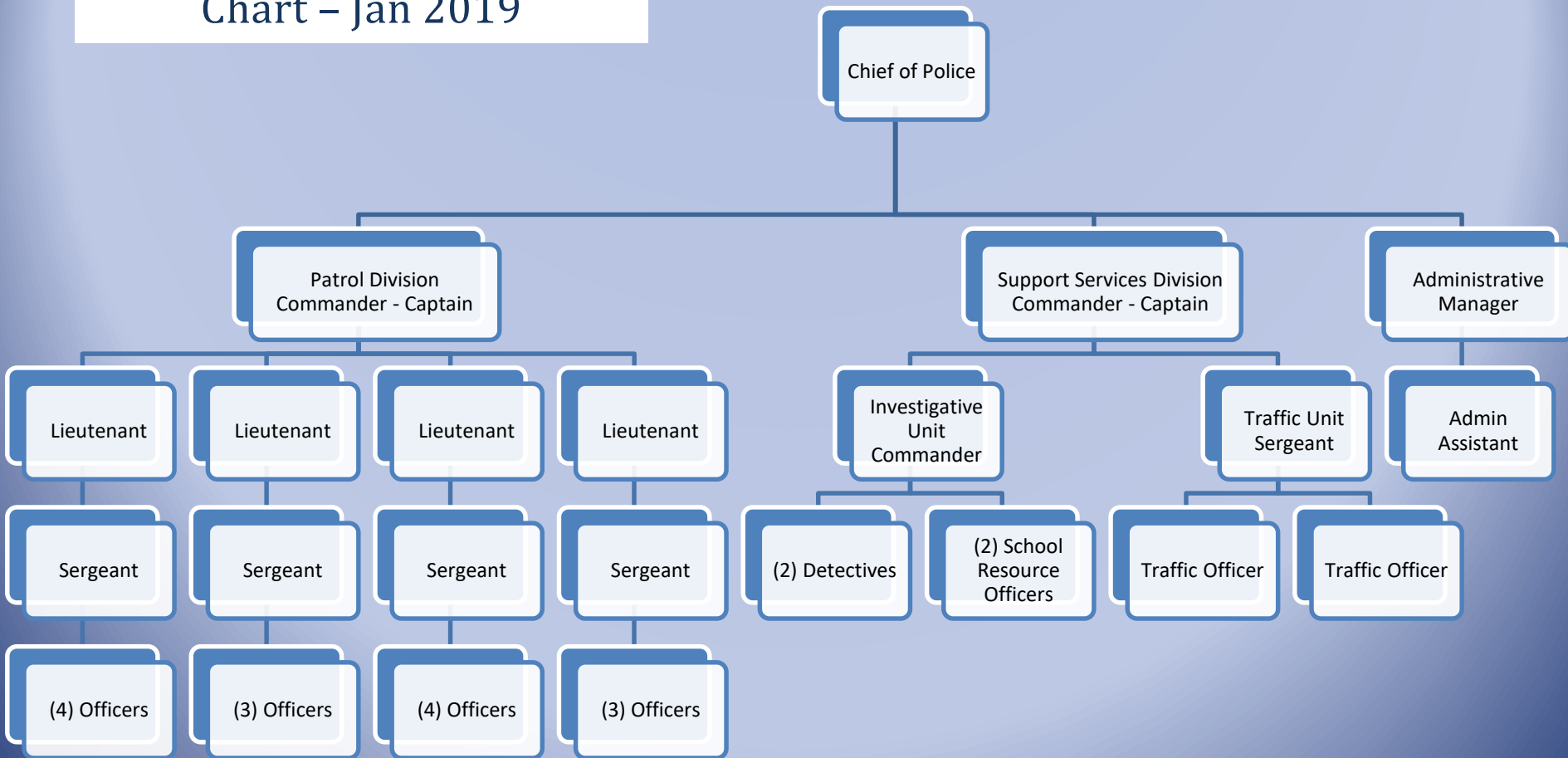


The Knightdale Police Department seeks to promote its mission through the use of professional policing practices and the formation of community partnerships. What profit is to a business, trust is to a police department. Essentially, trust is our currency.

In an effort to increase the level of trust and transparency between the community and its law enforcement professionals, the agency has compiled a brief summary of data related to issues that impact the Town of Knightdale and its citizens. The following data is not all inclusive, but intends to provide an overview of our efforts and work throughout the year. We welcome your call or visit should you have any questions or concerns regarding this statistical information.

# Knightsdale Police Department Organizational Chart – Jan 2019





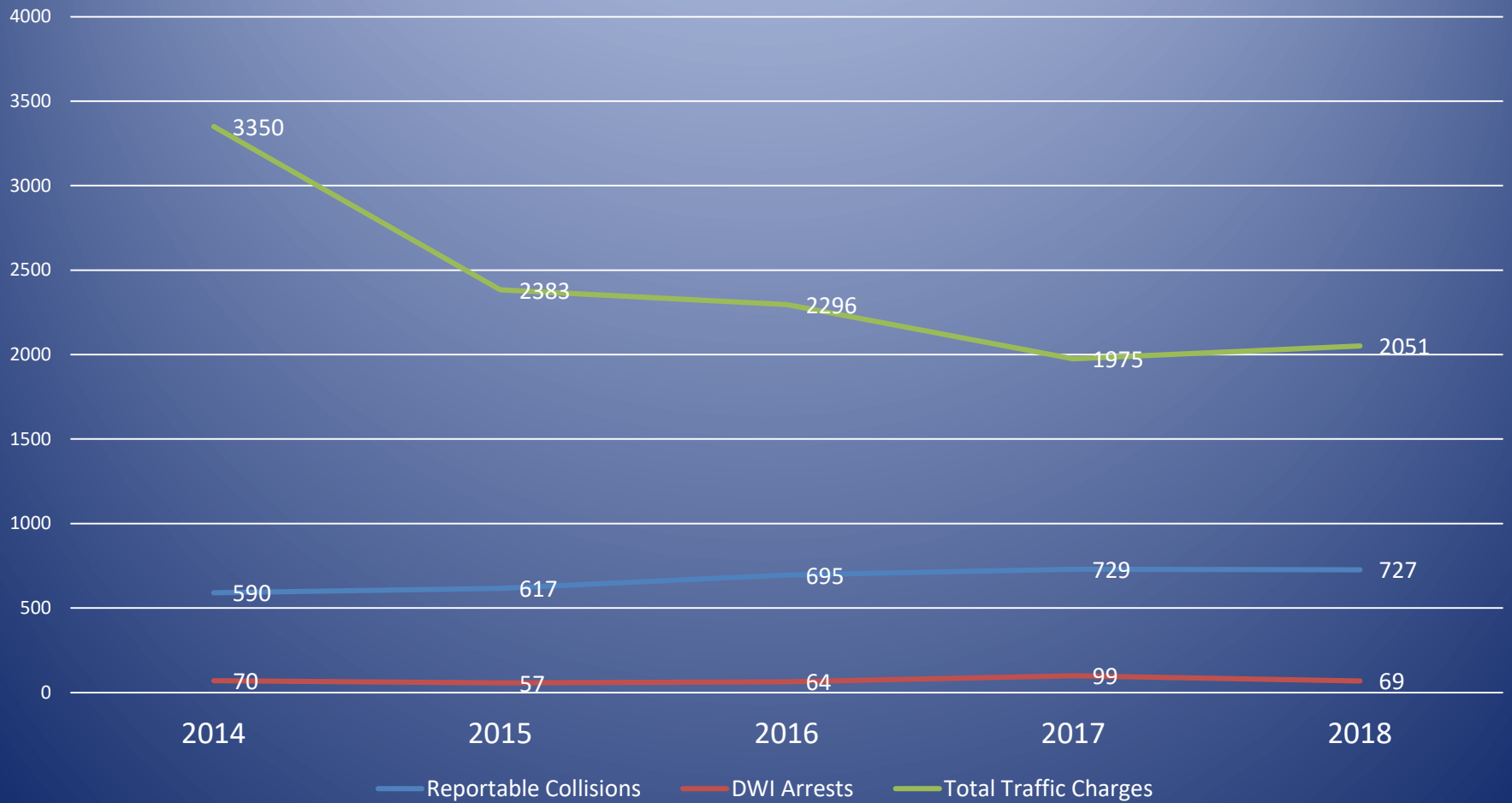
## Selection and Hiring Overview for 2018

Race/Sex Applicant	Applied	Selected for Testing*	%	Selected for Oral Board	%	Selected for Background	%	Selected	%
White male	39	13	33%	5	38%	3	60%	2	5%
White female	12	4	33%	1	25%	0	0%	0	0%
Black male	38	8	21%	2	25%	1	50%	1	3%
Black female	15	4	27%	0	0%	0	0%	0	0%
Other male	2	0	0%	0	0%	0	0%	0	0%
Other female	0	0	0%	0	0%	0	0%	0	0%
Hispanic	11	2	18%	1	50%	1	100%	0	0%
Unknown/Not Reported	2	0	0%	0	0%	0	0%	0	0%
Applicant Age	Applied	Tested		Oral Board		Background		Selected	
18-24	42	10	24%	3	30%	1	33%	1	2%
25-30	38	10	26%	2	20%	2	100%	1	3%
31-35	17	4	24%	2	50%	1	50%	1	6%
36-40	3	2	67%	1	50%	1	100%	0	0%
41-45	12	4	33%	0	0%	0	0%	0	0%
46-50	3	1	33%	1	100%	0	0%	0	0%
50+	2	0	0%	0	0%	0	0%	0	0%
Unknown/Not Reported	2	0	0%	0	0%	0	0%	0	0%
Applicant Education Level	Applied	Tested		Oral Board		Background		Selected	
High School / Equivalent	17	4	24%	1	25%	0	0%	0	0%
Some College/ Associates	56	15	27%	2	13%	2	100%	1	2%
Bachelors	44	11	25%	5	45%	3	60%	2	5%
Masters	2	1	50%	1	100%	0	0%	0	0%
Beyond Masters	0	0	0%	0	0%	0	0%	0	0%
Yrs LE Experience	Applied	Tested		Oral Board		Background		Selected	
0 years	84	15	18%	5	33%	3	60%	1	1%
1-2 years	11	4	36%	0	0%	0	0%	0	0%
3-5 years	12	7	58%	3	43%	1	33%	1	8%
6-10 years	6	2	33%	0	0%	0	0%	0	0%
11-15 years	5	3	60%	1	33%	1	100%	1	20%
16-20 years	0	0	0%	0	0%	0	0%	0	0%
20+ years	1	0	0%	0	0%	0	0%	0	0%

# Part 1 Crimes (4-Year Trend)



# Traffic Related Statistics: 5-Year Trend

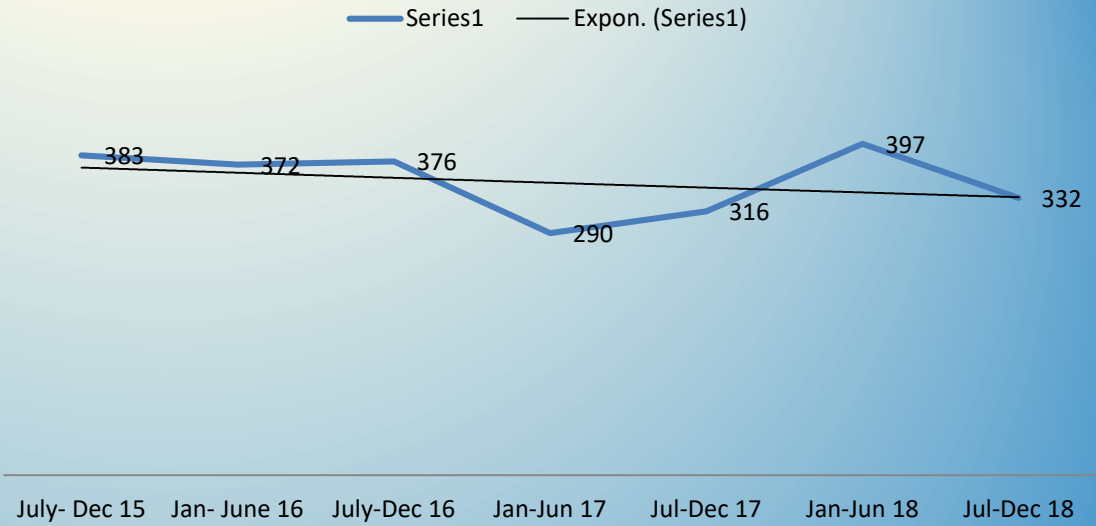


# Enforcement Actions Pursuant to Traffic Stops

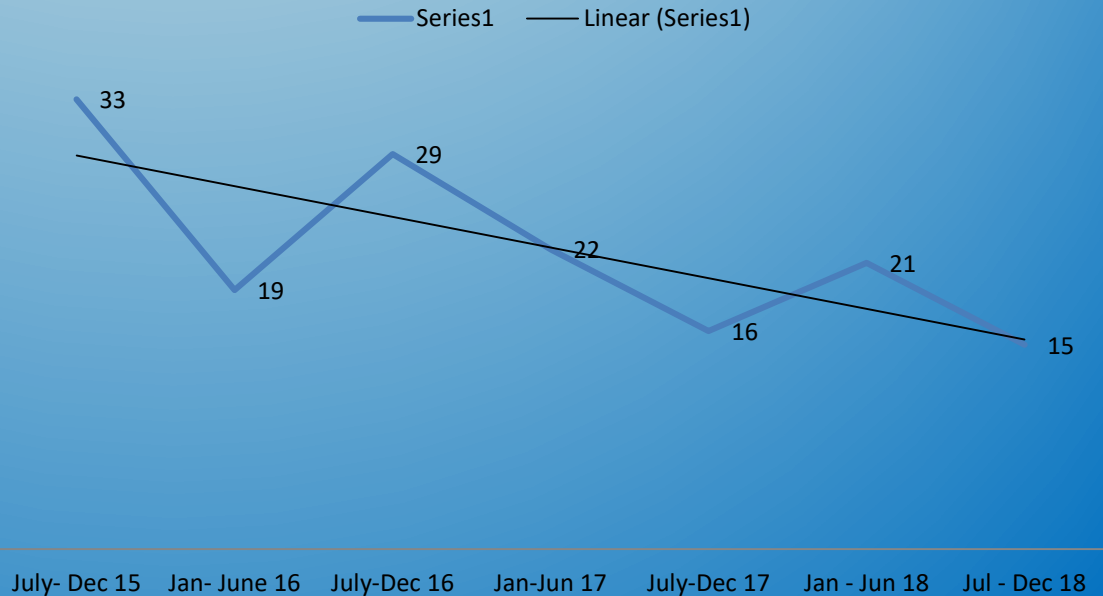
2015	Male	Female	White	Black	Other	Hispanic
Citation	40.8%	38.8%	40.9%	39.0%	41.3%	60.5%
Physical arrest	2.6%	1.2%	1.9%	2.1%	2.6%	1.7%
Warning	53.9%	57.0%	54.6%	55.9%	53.3%	35.2%
No action	2.6%	2.9%	2.6%	2.9%	2.6%	2.6%
	100%	100%	100%	100%	100%	100%
2016						
Citation	37.0%	37.0%	39.0%	35.0%	39.0%	50.0%
Physical arrest	2.6%	1.0%	1.7%	2.1%	1.4%	1.9%
Warning	58.0%	60.0%	57.0%	61.0%	56.0%	47.0%
No action	2.4%	2.1%	2.3%	1.9%	3.6%	1.1%
	100%	100%	100%	100%	100%	100%
2017						
Citation	37.7%	37.2%	38.7%	36.3%	43.1%	46.1%
Physical arrest	3.1%	0.5%	2.0%	2.1%	3.5%	3.6%
Warning	57.6%	60.6%	57.5%	60.1%	53.5%	48.0%
No action	1.6%	1.6%	2.1%	1.4%	0.0%	2.2%
	100%	100%	100%	100%	100%	100%
2018	Male	Female	White	Black	Other	Hispanic
Citation	38.1%	37.9%	40.3%	35.8%	46.3%	47.0%
Physical arrest	2.5%	1.1%	1.9%	2.0%	0.0%	2.7%
Warning	57.5%	59.9%	55.8%	60.9%	52.5%	47.9%
No action	1.9%	1.2%	2.0%	1.2%	1.3%	2.4%
	100.00%	100.00%	100.00%	100.0	100.0	100.00%

# Overview of Police Activity at Knightdale High School

## Calls for Service - High School



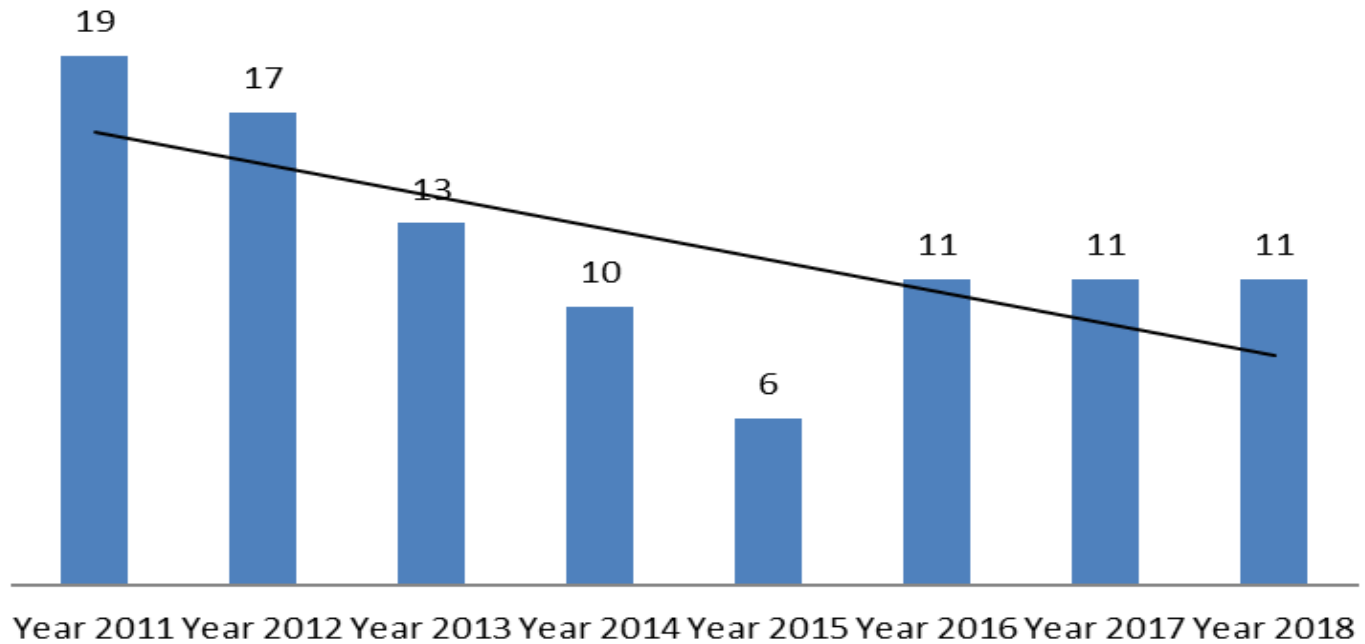
## High School Reportable Incidents



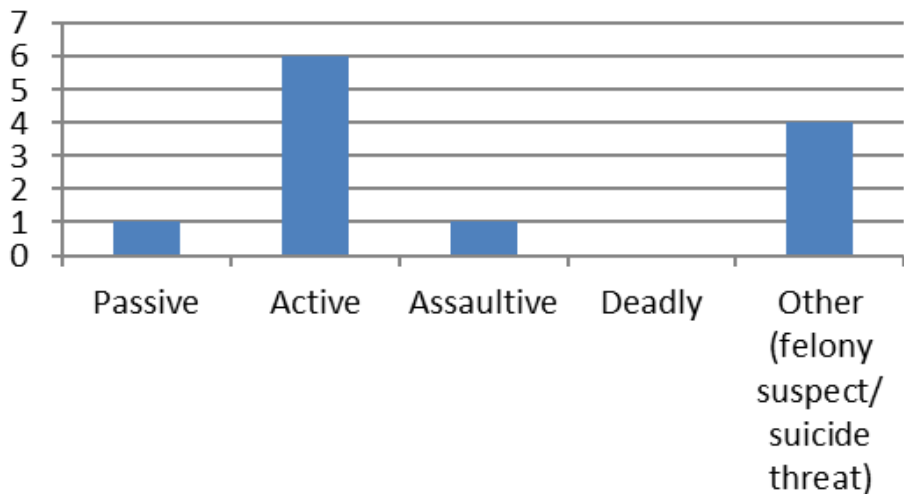


# Response to Resistance Statistics

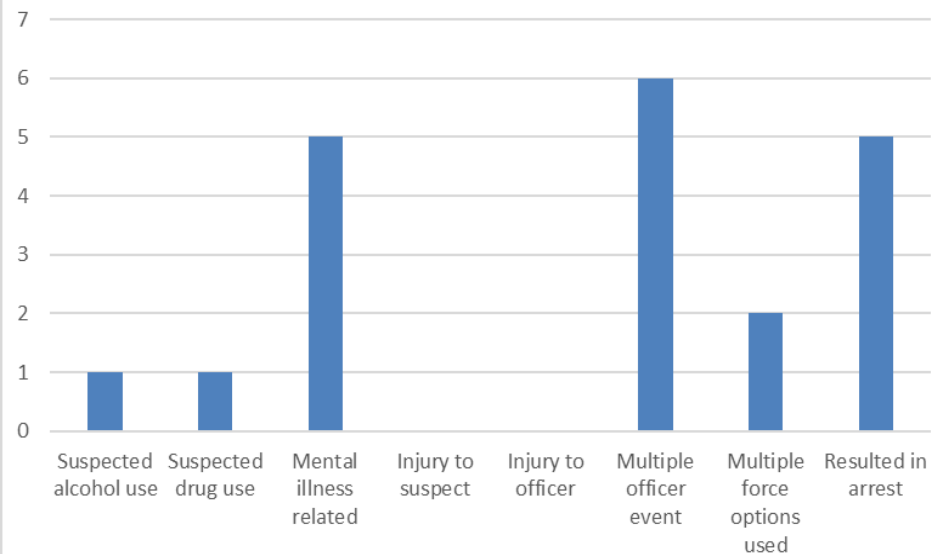
## Number of Incidents



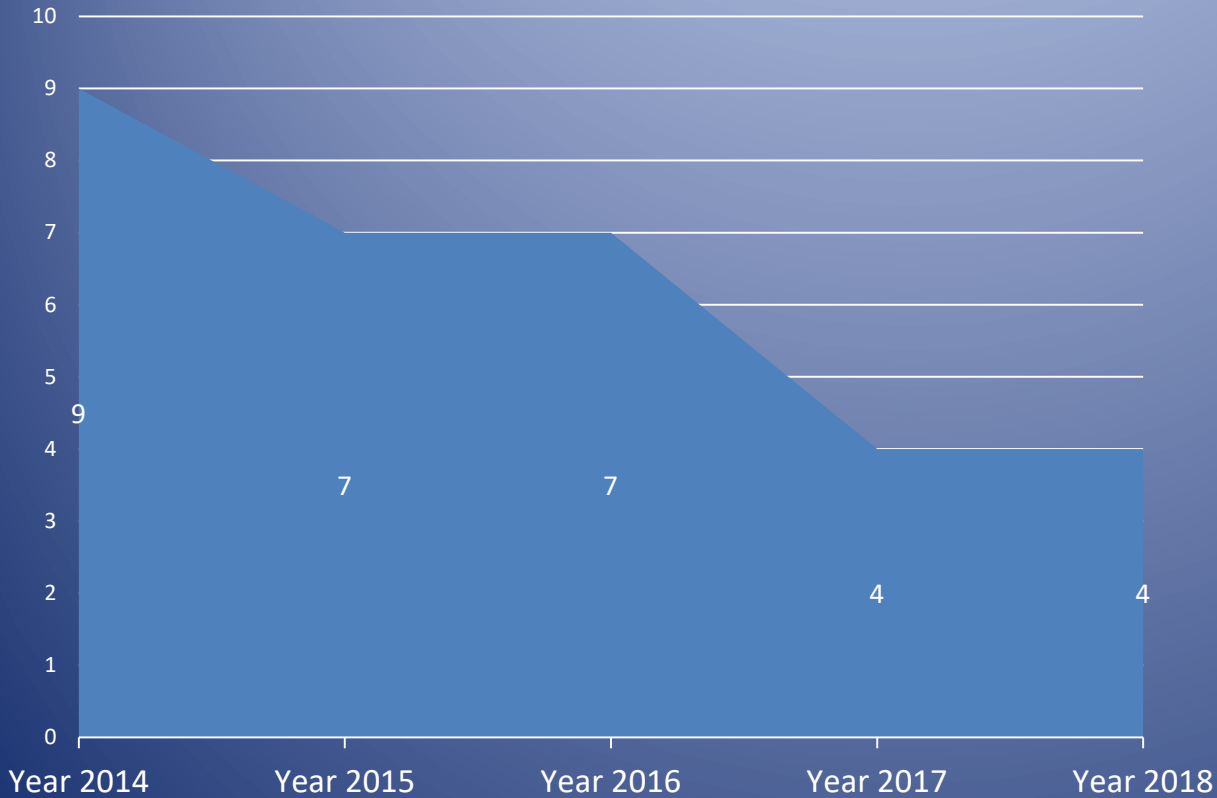
## Resistance Encountered



## Misc Data



# Complaints Against Department Members 5-Year Trend



## *Overview of 2018 Complaints*



Total Number of Complaints  
against Department Members: 4

Percentage of Decrease/Increase  
from Previous Year: 0.0%

Level I Complaints: 3

Level II Complaints: 1

Number of Complaints Forwarded  
to Internal Affairs: 3

### Dispositions

Sustained: 1

Not Sustained: 0

Exonerated: 1

Unfounded: 2